

LC TAP MODULE

A PERFECT BLEND OF PERFORMANCE AND FLEXIBILITY

The MOD-TAP is a high-density, modular fiber optic solution providing up to 24 LC TAP modules or 16 MTP or 40G BiDi TAP modules in 1U.

LC Fiber Optic Modules use LC connectors which are available in Single-Mode (1310/1550nm 9/125µm) and Multi-Mode (850/1300nm 50µm and 62.5µm), with split ratios ranging from 50/50 to 70/30.



MAXIMUM INSERTION LOSS (DB)

| SPLIT RATIO* | 50 / 50 | 60 / 40 | 70 / 30 |
|-------------------|-----------|-----------|-----------|
| Multi-Mode 50µm | 3.8 / 3.8 | 2.8 / 4.8 | 2.2 / 6.1 |
| Multi-Mode 62.5µm | 4.0 / 4.0 | 3.0 / 5.0 | 2.4 / 6.3 |
| Single-Mode 9µm | 3.4 / 3.4 | 2.5 / 4.5 | 1.7 / 5.8 |

Note: These values don't include external connector loss. * Other split ratios available on demand

FEATURES

- Non-intrusive in-line monitoring
- Permanent network link guaranteed
- Monitoring of all OSI layers
- No packet loss, no point of failure
- Passive, unpowered
- Various split ratios available

PRODUCT SPECIFICATIONS

| CHASSIS | | | | ORDER REFERENCE |
|---------------------------------------|------------|-----|---------------------|---------------------|
| 1U Modular Chassis (up to 24 modules) | | | | AMC-1U |
| FIBER TYPE | SPEED | WDM | SPLIT RATIO | ORDER REFERENCE |
| MM 62.5 µm | 1-10 Gbps | No | 50/50 | FIL-MOD-U-50 |
| | | | 60/40 | FIL-MOD-U-60 |
| | | | 70/30 | FIL-MOD-U-70 |
| OM4 50 µm | 1-100 Gbps | Yes | 50/50 | FIL-MOD-Z-50 |
| | | | 60/40 | FIL-MOD-Z-60 |
| | | | 70/30 | FIL-MOD-Z-70 |
| OM5 50 µm | 1-100 Gbps | Yes | Available on demand | |
| OS2 9 µm | 1-400 Gbps | Yes | 50/50 | FIL-MOD-S-50 |
| | | | 60/40 | FIL-MOD-S-60 |
| | | | 70/30 | FIL-MOD-S-70 |

PRODUCT DIMENSIONS

| | DIMENSIONS (WxDxH) | WEIGHT |
|-----------------|--------------------|---------|
| MODULAR CHASSIS | 440 x 202 x 44 mm | 2140 g |
| | 17.3 x 8 x 1.7 in | 4.7 lb |
| LC MODULE | 17 x 217 x 41 mm | 76 g |
| | 0.7 x 8.5 x 1.6 in | 0.17 lb |



MTP TAP MODULE

A PERFECT BLEND OF PERFORMANCE AND FLEXIBILITY

The MOD-TAP is a high-density, modular fiber optic solution providing up to 24 LC TAP modules or 16 MTP or 40G BiDi TAP modules in 1U.

MTP Fiber Optic Modules use low insertion loss US Conec MTP Elite® connectors.



MAXIMUM INSERTION LOSS (DB)

| FIBER TYPE | 50 / 50 | 70 / 30 |
|---------------------------|-----------|-----------|
| Multi-Mode SR4 / SR10 | 4.2 / 4.2 | — |
| Single-Mode 40GBASE-PLR4 | 3.8 / 3.8 | 2.4 / 6.1 |
| Single-Mode 100GBASE-PSM4 | 3.8 / 3.8 | 2.4 / 6.1 |

Note: These values don't include external connector loss.

FEATURES

- Non-intrusive in-line monitoring
- Permanent network link guaranteed
- Monitoring of all OSI layers
- No packet loss, no point of failure
- Passive, unpowered
- High density and modular

PRODUCT SPECIFICATIONS

| CHASSIS | ORDER REFERENCE |
|---|-----------------|
| 1U Modular Chassis (up to 16 MTP modules) | AMC-1U |

| CONNECTORS | TYPE / SPEED | SPLIT RATIO | ORDER REFERENCE |
|------------|--|-------------|------------------------|
| MTP/MPO | MM 40GBASE-SR4 / 40 Gbps | 50/50 | FIM-MOD-SR4-50 |
| | MM 100GBASE-SR4 / 100 Gbps | | |
| | MM 100GBASE-SR10 / 100 Gbps | 50/50 | FIM-MOD-SR10-50 |
| | SM 40GBASE-PLR4 / 40Gbps SM 100GBASE-PSM4 / 100Gbps | 50/50 | FIM-MOD-SM-50 |
| | SM 40GBASE-PLR4 / 40Gbps SM 100GBASE-PSM4 / 100Gbps | 70/30 | FIM-MOD-SM-70 |

PRODUCT DIMENSIONS

| | DIMENSIONS (WxDxH) | WEIGHT |
|-----------------|--------------------|--------|
| MODULAR CHASSIS | 440 x 202 x 44 mm | 2140 g |
| | 17.3 x 8 x 1.7 in | 4.7 lb |
| MTP MODULE | 25 x 217 x 41 mm | 90 g |
| | 1 x 8.5 x 1.6 in | 0.2 lb |

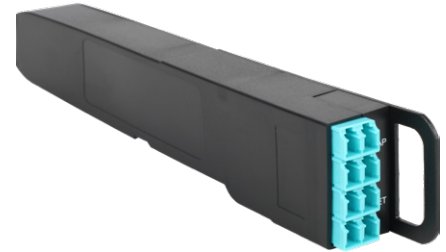


40/100G BiDi TAP MODULES

A PERFECT BLEND OF PERFORMANCE AND FLEXIBILITY

The MOD-TAP is a high-density, modular fiber optic solution providing up to 24 LC TAP modules or 16 MTP or BiDi TAP modules in 1U.

BiDi Fiber TAP Modules are available in OM4 or OM5 Multi-Mode (832-918nm 50/125µm) fiber optic cabling with a 50/50 split ratio for the monitoring of Cisco bidirectional links.



TECHNICAL SPECIFICATIONS

| CHASSIS | ORDER REFERENCE |
|--|-----------------|
| 1U Modular Chassis (up to 16 BiDi modules) | AMC-1U |

| CONNECTORS | TYPE — SPEED | SPLIT RATIO | ORDER REFERENCE |
|------------|------------------------|-------------|-----------------|
| LC | OM4 MM 50µm — 40G/100G | 50/50 | F1B-MOD |
| LC | OM5 MM 50µm — 40G/100G | 50/50 | F1B2-MOD |

| | DIMENSIONS (WxDxH) | WEIGHT |
|---------------------|--|------------------|
| MODULAR CHASSIS | 440 x 202 x 44 mm 17.3 x 8 x 1.7 in | 2140 g 4.7 lb |
| 40/100G BiDi MODULE | 25 x 217 x 41 mm 1 x 8.5 x 1.6 in | 90 g 0.2 lb |

FEATURES

- Non-intrusive in-line monitoring
- Permanent network link guaranteed
- Monitoring of all OSI layers
- No packet loss, no point of failure
- Passive, unpowered
- High density and modular
- 40G and 100G dual-rate capability
- Backward compatibility with 40G BiDi

MAXIMUM INSERTION LOSS (DB)

| | |
|----------------------------|-----------|
| 40/100G BiDi (OM4 MM 50µm) | 3.8 / 3.8 |
| 40/100G BiDi (OM5 MM 50µm) | 3.8 / 3.8 |

Note: These values don't include external connector loss.



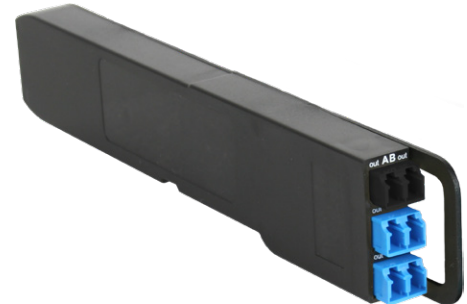
DIODETAP

LC TAP MODULE WITH TOTAL PROTECTION

The DiodeTAP Module provides a TAP point with an innovative security feature. It prevents any potential attacks or disruptions by blocking light coming from the monitor ports.

The DiodeTAP ensures total security and availability for monitored networks, while providing 100% visibility.

The DiodeTAP Module is part of the MOD-TAP series, and uses the Modular Chassis for rack mounting, providing up to 24 modules in 1U.



MAXIMUM INSERTION LOSS (DB)

| SPLIT RATIO* | 50 / 50 | 60 / 40 |
|-----------------|-------------------------|-------------------------|
| Single-Mode 9µm | Network: 3.6 / TAP: 4.4 | Network: 2.7 / TAP: 5.5 |

Note: These values don't include external connector loss.
* Other split ratios available on demand

PRODUCT DIMENSIONS

| | DIMENSIONS (WxDxH) | WEIGHT |
|-----------------|--------------------|---------|
| Modular Chassis | 440 x 202 x 44 mm | 2140 g |
| | 17.3 x 8 x 1.7 in | 4.7 lb |
| DiodeTAP Module | 17 x 217 x 41 mm | 76 g |
| | 0.7 x 8.5 x 1.6 in | 0.17 lb |

PRODUCT SPECIFICATIONS

| CHASSIS | ORDER REFERENCE | | |
|---------------------------------------|-----------------|-------------|-----------------|
| 1U Modular Chassis (up to 24 modules) | AMC-1U | | |
| MODULE | WAVELENGTH | SPLIT RATIO | ORDER REFERENCE |
| LC DiodeTAP | 1310nm | 50/50 | F1D-MOD-13-50 |
| | | 60/40 | F1D-MOD-13-60 |
| SM 9/125 µm | 1550nm | 50/50 | F1D-MOD-15-50 |
| | | 60/40 | F1D-MOD-15-60 |

FEATURES

- Diode function protects network against light insertion from TAP ports (>35 dB insertion loss on TAP port input blocks all signal)
- Non-intrusive in-line monitoring
- Permanent network link guaranteed
- Monitoring of all OSI layers
- No packet loss, no point of failure
- Passive, unpowered
- Various split ratios available

