

# The Network Industry's First 100G Packet Capture Appliance



## Capture 100% / Replay 100%

### BENEFITS

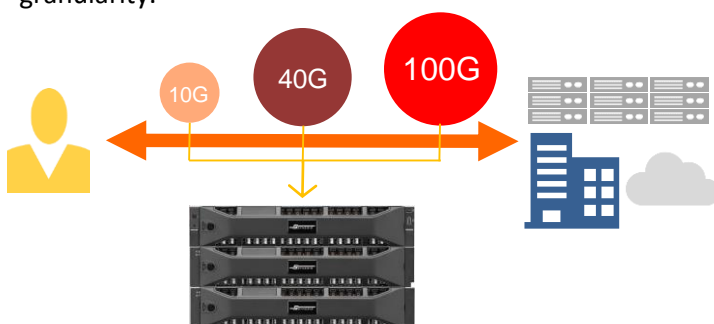
- ✓ Improve customer experience
- ✓ Prevent loss of business due to network downtime
- ✓ Insure network infrastructure vendors have complete data for troubleshooting
- ✓ Extend the value of existing network tools with automated actions
- ✓ Reduce network operating cost with better team collaboration and efficiency

**SYNESIS** is a network data recorder that can continuously capture up to **100Gbps**. **SYNESIS**, being an all-in-one packet capture system, is easily deployed in data centers, remote site branches, and test labs as a physical appliance. Configuration is minimal so it can be installed and capturing high speed traffic in minutes.

Existing network tools just can't keep up with today's traffic rates caused by increased user demand for bandwidth intensive applications. The result - oversubscription of tools which leads to misdiagnosis. Only **SYNESIS** is able to capture all network packet data completely and at high granularity.

### HIGHLIGHTS

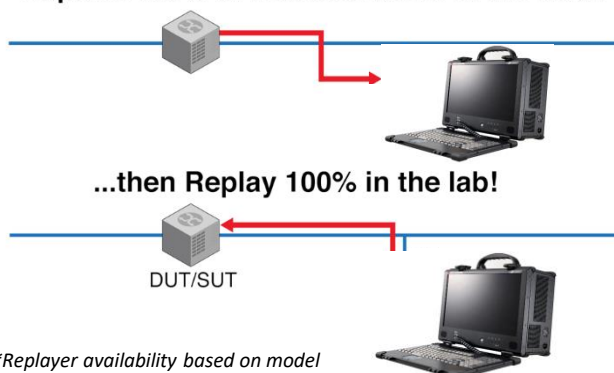
- ✓ Industry's first Zero Packet-Loss Full Duplex Stream-to-Disk Solution up to 100Gbps
- ✓ Support for 1G/10G/40G/100G interfaces
- ✓ Storage capacity configurations from 5TB to 300TB (Optional)
- ✓ Web browser based Protocol Analyzer with real-time decode.
- ✓ Wireshark analyzer can be installed as a plugin
- ✓ Open Architecture with REST
- ✓ Built-in Network and Application performance analytic engines
- ✓ Strong data indexing provides fast packet retrieval from storage
- ✓ Detect microburst traffic in 100 microsec intervals
- ✓ Available as complete turn-key system
- ✓ Multi-TB captured packets playback in micro-second level allowing to replay microburst traffic
- ✓ Packets can be edited before sending to network



### Now with Replayer!

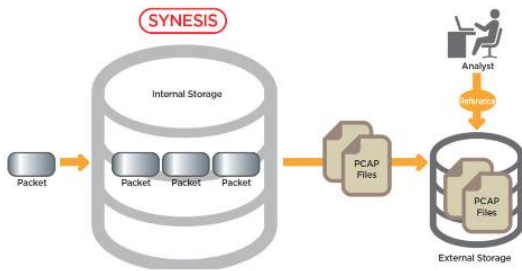
Replay single packets or data from extended long term capture sessions. Perfect application for R&D/QA and Field Support teams!

#### Capture 100% of network traffic in the field!



*\*Replayer availability based on model*

## Packet Capture



SYNESIS is a capture appliance compatible with 10M/100M/1G/10G/40G/100G networks that can capture traffic at wire speed without data loss.

A backup function allows saving to PCAP files automatically while capturing. The storage destination can either be a local or remote file system.

## Application Performance Monitoring Support

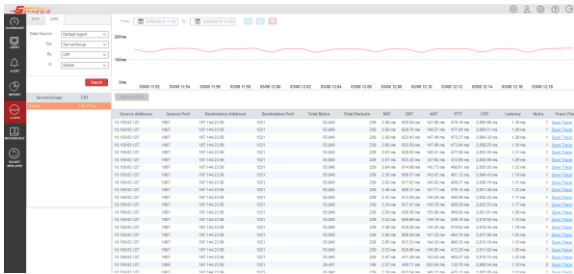


Figure 1: APM and NPM analysis

By using the capture indexing function, the KPI (Key Performance Indicator) network status can be ascertained at a trend level basis.

## Intelligent Report Builder

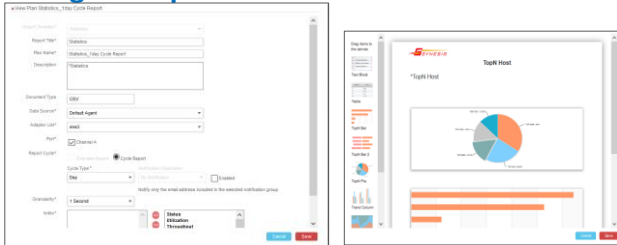


Figure 2: Intelligent report engine with drag and drop ability

Users can build reports by using drag -and -drop with modular graphic components and pre-defined templates. The report can be created daily, weekly and monthly with auto notification function.

## Customized and Profiling Dashboard

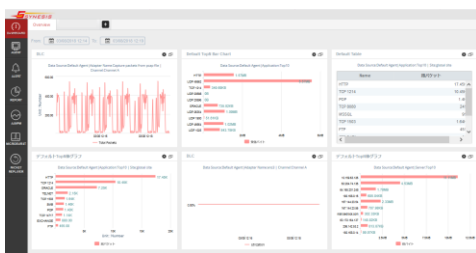


Figure 3: Customized and Profiling Dashboard

The Dashboard is a page that displays real-time trend information for each selected agent. Each user will have their own dedicated configurable dashboards display which also allows customization on display widget and page level. Any dashboards added or removed are user base. Multiple dashboard profiles are supported

## PacketReplayer

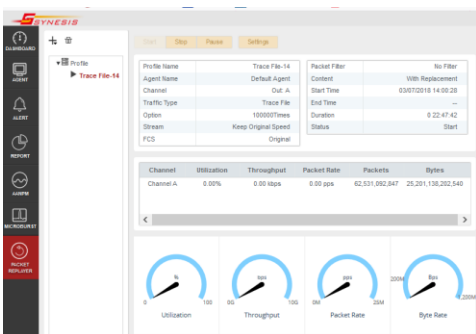


Figure 4: Packet Replayer – Replay real life traffic

Real-life Wire-rate Traffic capture and replay up to **100Gbps** with micro-second level packet gap granularity, the following items can be replaced from the packet header within the PCAP file.

- MAC address
- VLAN ID
- IP address (v4/v6)

# Systems Specifications

Model	SYU-2G-ER	SYU-4G-STR	SYU-4G-HPR	SYU-8G2-HPR	SYU-10G-R	SYU-20G-R	SYU-20G-HPR	SYU-40G-HPR	SYU-80G2-HPR	SYU-100G-HPR
Monitoring Port	4 x 1GbE	4 x 1GbE	4 x 1GbE	8 x 1GbE	2 x 10GbE/1GbE	4 x 10GbE/1GbE	2 x 10GbE/1GbE	4 x 10GbE/1GbE	8 x 10GbE/1GbE	4 x 10GbE/1GbE 2 x 40GbE 2 x 100GbE
Interface	10/100/1000 M Base-T/SX/LX	10/100/1000 M Base-T/SX/LX	10/100/1000 M Base-T/SX/LX	10/100/1000 M Base-T/SX/LX	1000 M Base-T/SX/LX 10G Base-T/SR/LR/ER	1000 M Base-T/SX/LX 10G Base-T/SR/LR/ER	1000 M Base-T/SX/LX 10G Base-T/SR/LR/ER	1000 M Base-T/SX/LX 10G Base-T/SR/LR/ER	1000 M Base-T/SX/LX 10G Base-T/SR/LR/ER	100G Base-SR4/LR4
Capture Performance	2Gbps	4Gbps	4Gbps	8Gbps	10Gbps	20Gbps	20Gbps	40Gbps	80Gbps	100Gbps
Local Storage (TB)	1.8	5.8	5.8	19.5	19.5	9.5	44.0	66.0	42.0	55.3
RAID	5	5	5	5	5	5	5	5	5	5
Power Consumption (W)	350	350	350	1100	1100	1100	Control 1100 x 1unit Storage 600 x 1unit	Control 1100 x 1unit Storage 600 x 2unit	Control 1100 x 1unit Storage 600 x 3unit	Control 1100 x 1unit Storage 600 x 4unit
Operating temperature/humidity	10-35°C /50-95°F /8%-85% (noncondensing)									
Weight (Kg)	18.5	19.3		22.0			Control unit:22 Storage unit: 24 (each unit)			
Dimensions H x W x D (cm)	4.3 x 43.4 x 67.7			8.7 x 44.4 x 68.4			Control unit: 8.7 x 44.4 x 68.4 Storage unit: 8.7 x 48.2 x 54.1			

Model	SYU-2G-EP	SYU-4G-STP	SYU-4G-HPP	SYU-10G-CP	SYU-20G-CP	SYU-20G-HPP	SYU-40G-HPP	SYU-80G-HPP	SYU-100G-HPP	
Monitoring Port	4 x 1GbE	4 x 1GbE	4 x 1GbE	2 x 10GbE/1GbE	2 x 10GbE/1GbE	2 x 10GbE/1GbE	4 x 10GbE/1GbE	4 x 10GbE/1GbE 2 x 40GbE 2 x 100GbE	4 x 10GbE/1GbE 2 x 40GbE 2 x 100GbE	
Interface	10/100/1000 M Base-T/SX/LX	10/100/1000 M Base-T/SX/LX	10/100/1000 M Base-T/SX/LX	1000 M Base-T/SX/LX 10G Base-T/SR/LR/ER	1000 M Base-T/SX/LX 10G Base-T/SR/LR/ER	1000 M Base-T/SX/LX 10G Base-T/SR/LR/ER	1000 M Base-T/SX/LX 10G Base-T/SR/LR/ER	40G SR4/LR4	100G SR4/LR4	
Capture Performance	2Gbps	4Gbps	4Gbps	10Gbps	20Gbps	20Gbps	40Gbps	80Gbps	100Gbps	
Local Storage (TB)	1.4	2.9	2.9	3.6	4.3	5.1	10.1	13.2	17.2	
RAID	N/A	N/A	N/A	N/A	N/A	N/A	N/A	N/A	N/A	
Power Consumption (W)	400	400	400	400	400	600(110V AC) 680(220VAC)	600(110V AC) 680(220VAC)	800	800	
Operating temperature/humidity	10-35°C /50-95°F /8%-85% (noncondensing)									
Weight (Kg)	8.8	9.0	9.0	9.0	9.0	12.6	13.4	18.2	19.8	
Dimensions H x W x D (cm)	25.4 x 38.1 x 17.8					32.9 x 40.6 x 17.5		33.9 x 43.0 x 25.0		

Model number and specifications are subject to change without notice

Contact in France : Wavetel - PARIS / RENNES / LARMOR-PLAGE - sales@wavetel.fr - 01 86 95 96 90

## TOYO Corporation

1-1-6, Yaesu ,Tokyo 103-8284, Japan  
Tel: +81 (3) 3245 1250  
Web: <http://www.toyo.co.jp/english/>  
Email: [synesis-sales@toyo.co.jp](mailto:synesis-sales@toyo.co.jp)

## TOYOTech LLC

Fremont Business Park, 42840 Christy St., Ste. 209, Fremont, CA 94538, USA  
Tel: +1 510 438 9548  
Web: <http://www.toyotechus.com/>  
E-mail: [info@toyotechus.com](mailto:info@toyotechus.com)

## TOYO China - Shanghai

Room 310, No.228 Meiyuan Road, Jingan District, Shanghai, PRC  
Zip: 200070  
Tel: +86 (21) 6380 9633  
Web: [www.toyochina.com.cn](http://www.toyochina.com.cn)  
Email: [ict@toyochina.com.cn](mailto:ict@toyochina.com.cn)

## TOYO China – Beijing

Room 301, Yeqing Plaza, No. 9 Wangjing North Road, Chaoyang District, Beijing, PRC  
Tel: +86 (10) 6439 2938  
Web: [www.toyochina.com.cn](http://www.toyochina.com.cn)  
Email: [ict@toyochina.com.cn](mailto:ict@toyochina.com.cn)