

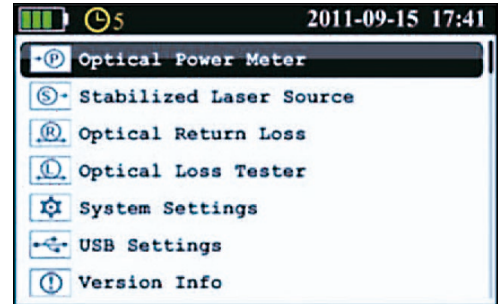
OLT-55

Intelligent Optical Loss Tester

OLT-55 Intelligent Optical Loss Tester is an all-in-one loss tester integrated with stabilized Laser Source, Optical Power Meter, Optical Loss Tester, ORL Tester and Length Testing functions. It can perform automatic bidirectional loss test on single fiber with Pass/Fail assessment. With rich functions, flexible configuration and excellent user friendly design, OLT-55 is the ideal optical loss tester to completely evaluate the optical fiber link condition in FTTx, LAN and CATV network.

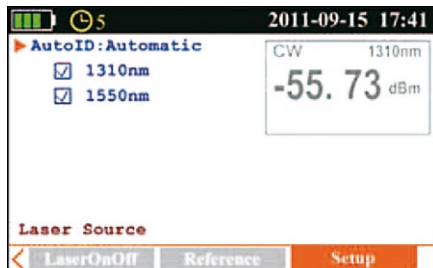
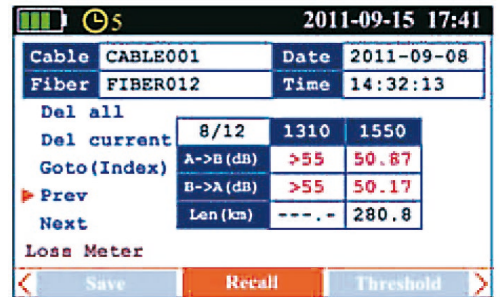
Features

- All-in-one: SLS + OPM + OLT + ORL + Length test.
- Optical power monitoring (Auto power trace).
- Bidirectional loss test on single fiber.
- ORL test.
- Pass/Fail assessment.
- Automatic wavelength identification/switch (Autel D).
- Remote reference value setting.
- Internal clock & fiber SIN editable.
- 1000 test records (CSV) storage & management.
- Data transfer to PC via USB (Driver-free).
- Auto test records save in local unit/remote unit/both units.
- USB power charging.
- Over 35 hours continuous operation.
- Multilanguage support.
- No warm-up, quick start.
- High resolution color LCD.
- Pocketsize, lightweight and easy-to-use



Automatic Bidirectional Loss Test on Single Fiber

Two OLT-55 at both ends of a single optical fiber can perform bidirectional loss test by just pressing one button and can automatically measure and display the entire fiber attenuation to help users acquire complete and accurate optical fiber loss information.



Specifications

| Model | OLT-55 | | |
|--------------------------------|-----------------------------------------------------------|------------------|-----------------------------|
| Stabilized Laser Source | | | |
| Wavelength (± 20nm) | 1310/1550nm | 1310/1490/1550nm | 1310/1550/1625nm |
| Spectrum Width | ≤ 5nm | | |
| Emitter Type | FP-LD | | |
| Output Power | > -4dBm | | |
| Power Stability | ±0.05dB/15min; ±0.10dB/8hr | | |
| Output Mode | CW, 270Hz, 1KHz, 2KHz | | |
| Optical Power Meter | | | |
| Calibrated Wavelength | 850, 1300, 1310, 1490, 1550, 1625nm | | |
| Power Range (dBm) | -70 ~ +10 (-60 ~ +10@850nm) | | -50 ~ +27 |
| Display Unit | W/mW/μW/nW/pW/dBm/dB(REF) | | |
| Detector Type | InGaAs | | |
| Accuracy | ± 5% ± 0.01nW (± 0.5 dB@850nm) | | ± 5% ± 1nW (± 0.5 dB@850nm) |
| Resolution | 0.01dB | | |
| Auto Wavelength Identification | Yes (With ShinewayTech specified Stabilized Laser Source) | | |
| MOD Identification | 270Hz, 1KHz, 2KHz | | |
| Optical Loss Test | | | |
| Link Loss Range | 50dB (1550 nm, 200 km) | | |
| Link Loss Accuracy | ±0.25dB | | |
| Link Loss Test Time | <2 seconds per wavelength | | |
| ORL Test (Optional) | | | |
| ORL Range | 0~60dB (APC connector) | | |
| ORL Accuracy | ± 0.75dB@(0~50dB), ± 1.5dB@(50~60dB) | | |
| ORL Uncertainty | ± 0.5dB@20dB | | |

| General Specifications | |
|------------------------|-------------------------------------|
| Connector | FC (Interchangeable SC, ST) |
| Data Storage | 1000 records |
| Data Interface | USB |
| Backlight Display | Yes |
| Auto Off | Yes (Auto-off after 5 minutes idle) |
| Power Supply | Lithium Battery/ AC Adapter |
| Battery life | Continuous operation ≥ 35 hours |
| Operating Temperature | 0°C ~ 50°C |
| Storage Temperature | -20°C ~ 70°C |
| Relative Humidity | 0 ~ 95% (Non-condensing) |
| Weight | 350g |
| Dimensions (H x W x L) | 177 x 80 x 44 mm |

*Specifications subject to change without notice

Ordering Information

