

LiveWire

LiveAction®

With deep LiveNX integrations, LiveWire makes it easy to transition from flow-level to packet-level analysis – and back again.

The Challenge

There's more data than ever on business networks as these networks expand to remote sites, WAN edge and data centers. Getting visibility across the entire network and troubleshooting networked applications fast is difficult. Most organizations use a host of network monitoring tools for analyze of flow and packet data. Using multiple tools makes solving issues time-consuming, impacting mean time to resolution (MTTR).

The Solution

LiveWire high-performance packet capture appliances integrates seamlessly with LiveNX to extend network monitoring and application troubleshooting to remote sites and branches, WAN edge, and data centers. LiveWire enables real-time and post-event analytics up to 100G and is perfect for capturing packets from virtually anywhere in the network.

LiveWire has deep integrations into LiveNX so you can now easily transition from flow-level to forensic-level analysis and back – in a single software solution. LiveWire uses LiveFlow to convert packet data into rich flow-based data using IPFIX and automatically exports this data into LiveNX. LiveNX then makes it easy to quickly identify and resolve application issues, such as VoIP and video performance problems, without the need for deep forensic analysis.



LiveWire Edge

Use Cases: Small Branches, WAN Edge



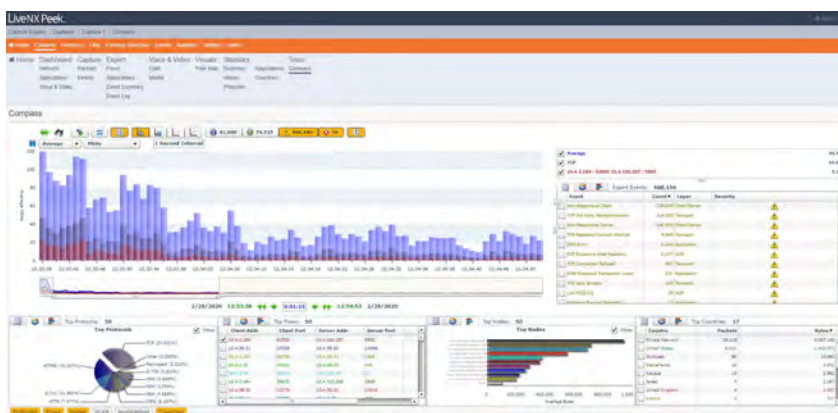
LiveWire Core

Use Cases: Large Branches, Data Center to WAN Edge



LiveWire PowerCore

Use Cases: Very Large Branches, Data Center, WAN, LAN



But should you need to dive deep into packet analysis, you can easily transition from flow to deep packet inspections as LiveWire captures real-time packet data for deep forensic analysis using LiveAction's renowned Omnipcap software.

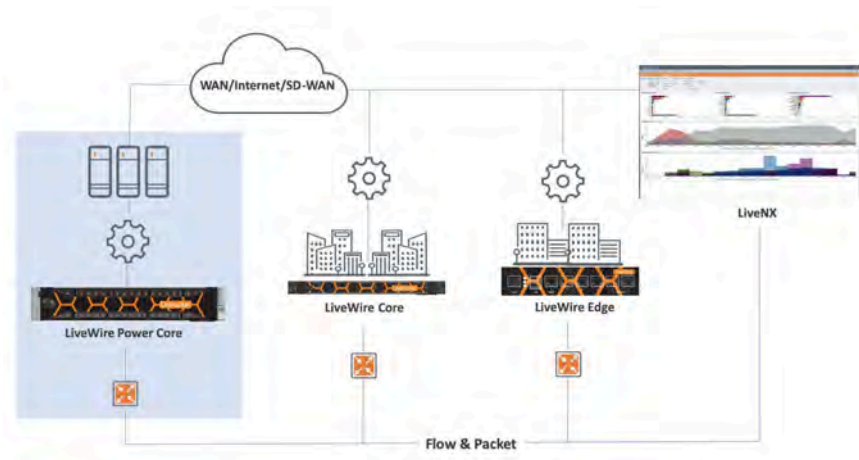
Benefits




- Optimize application performance at remote sites, WAN edge, & data centers
- Enable real-time and post-event analytics up to 100G
- Solve issues faster using both with flow and packet-level analysis
- 24x 7 remote troubleshooting and reporting
- Easily troubleshooting of VoIP and video performance issues
- Easy configuration and management of numerous LiveWire devices when devices are connected to the internet

LiveWire Overview

LiveWire high-performance appliances are designed for a variety of use cases at remote sites, branches, data centers, LAN, and WAN edge. All LiveWire appliances are designed to work seamlessly with LiveNX, making it easy to transition from flow-level to packet-level analysis, and back, in a single user interface.

Place LiveWire inline to automatically begin collecting network statistics and trend data for immediate display and long-term reporting. Users can instantly access in-depth analytics on network activity such as bandwidth utilization, application response times, flow volume, packet types, expert events, security events, and VoIP calls.



	LiveWire Edge	LiveWire Core	LiveWire PowerCore
LiveWire Devices			
Use Cases	Small branches and remote sites. WAN edge.	Large branches. Data centers. WAN edge.	Very large branches. Data centers. WAN. LAN.
LiveFlow Export to LiveNX	Up to 360 Mbps	Up to 4 Gbps	Up to 17 Gbps
Forensic Capture (CTD)	Up to 850 Mbps	Up to 4 Gbps	Up to 40 Gbps*
Memory	16 GB	32 GB	192 GB
Storage Capacity	1 TB SSD	16 TB	64TB or 128TB
Device dimensions / Weight	7-by-1.7-by-5.7-inches: 2.64 lbs	1U, 39 lbs	2U, 73 lbs
Includes Omnippeek for Windows Packet Analysis	Yes (1 license)	Yes (1 license)	Yes (1 license)
Volp, Video and UC Analysis	Yes	Yes	Yes

*requires external storage

LiveAction
3500 West Bayshore Rd
Palo Alto, CA 94303

Phone + eFAX: +1 888-881-1116
Email: sales@liveaction.com
Website: www.liveaction.com



WAVETEL PARIS | RENNES | LARMOR-PLAGE
sales@wavetel.fr | +33(0)2 99 14 69 65
www.wavetel.fr

022519