

# LinkRunner® 10G

## Advanced Ethernet Te

### Overview

Introducing the new LinkRunner 10G, the most cost-effective solution for 10 Gig network testing. LinkRunner 10G simplifies testing and configuration of copper and fiber Ethernet networks, streamlining workflows by combining essential functions of installation and triage in a single, ruggedized unit.

This next-generation Android-based tester delivers complete network validation and troubleshooting, from the media (copper/fiber) to the application (layers 1 – 7), accelerating deployments, speeding problem identification, and improving the efficiency and effectiveness of network installers and operations teams.

- Install, test, verify, and troubleshoot technology upgrades, Multi-Gig (NBASE-T) and 10G networks with advanced Android™-based troubleshooting apps and purpose-built test hardware
- Physical layer testing includes cable (TDR) testing, toning, wiremapping, and cable SNR (Signal-to-Noise Ratio) for Multi-Gig links
- Compatibility with standards compliant SFPs enables test and validation of any wired media (copper or fiber) for a variety of use models
- Validate up to 90W 802.3bt PSE with TruePower™ loaded Power over Ethernet (PoE) test
- Serves as a peer to the EtherScope™ nXG for line-rate performance testing to verify network capacity, performance and QoS, as well as service provider SLAs between sites



**Cost-Effective, Line-Rate  
10Gig Ethernet Testing**

### Key Features

#### Flexible Platform for a Variety of Testing Needs

The LinkRunner 10G has two Ethernet ports. The main test RJ-45 port supports Multi-Gig networks from 10/100/1000Mbps to 2.5/5/10G to verify link speed, SNR, and duplex advertised and connected. It can request and verify PoE power under load from up to 90W PSE's. Alternatively, it can interface to fiber networks via single/multi-mode SFP+ to test 1/10Gbps fiber-based Ethernet. The second RJ-45 management port connects to 10/100/1000Mbps Ethernet for remote control, and conducts network scanning and tests where needed. It is also the port for cable testing.

In addition to fiber optic transceivers (SX, LX, SR, LR, ZX, singlemode, multimode, etc.) the SFP+ slot can be utilized with a variety of standards-based interfaces, such as TwinAx or other Direct Attach Copper (DAC) cables, and vendor-specific transceivers.

As an Android-based device, LinkRunner 10G can use a variety of apps from the Link-Live app store for a variety of uses. The USB-A port provides connectivity for added USB adapters and third-party accessories such as printers, barcode scanners, fiber optic inspection cameras, and more. The use of a USB-based Wi-Fi adapter (such as the Edimax AC1200 for 802.11ac/b/g/n/) provides for connectivity and wireless testing using a third-party app.

The USB-C port is compatible with higher-power USB-C chargers, as well as external power-packs for all-day portable use.

Main Ethernet Test Ports (RJ-45 & SFP)



Cable Test & Management Ports

USB-C



## Simplifies tasks and empowers technicians to verify complex networks with next generation AutoTest

The LinkRunner 10G has out-of-the-box AutoTest profiles with best practice pass/fail thresholds for quick assessment of network configurations and services.

AutoTest Element Configurations include:

- Switch port PoE validation up to 90W from PSE and TruePower™ load testing
- 802.1x authentication
- Link speed/duplex advertised vs. actual, Multi-Gig link SNR measurement
- VLAN Tagged traffic detection & monitoring
- Switch port identification with interface stats, connected devices and drill-down
- DHCP availability, response time, automatic detection of 2nd DHCP offer, and connect log
- DNS lookup (forward/reverse) availability and response time
- Gateway availability and response time
- Active connection test targets (Ping or TCP Connect)
- End-user response time measurement via HTTP

Multiple profiles can be created for complex networks with multiple VLANs supported per switch port, each with its own set of IP targets. These can then be organized into profile groups that execute each test against each profile in sequence. The result is that multiple VLANs can be verified and documented in one go. Since the pre-defined profiles can be executed individually, the profiles group serves as a resource for technicians to verify each specific VLAN during troubleshooting. With profile groups, engineers can transfer their network configuration and test knowledge to technicians, saving training time and effort.

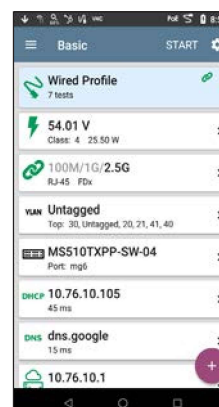
## Multi-Gig Link Validation

With the expanding deployment of Multi-Gig switching (typically to feed greater bandwidth to Wi-Fi 6 access points), users are finding that their cable plant may not support the desired speed. Cable quality, length, installation workmanship, and noise in the environment all can contribute to “downshifting” to lower-than-expected speeds.

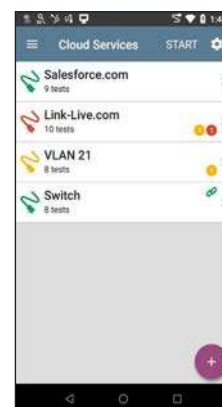
- **Cabling SNR Measurement** – EtherScope nXG can now verify copper media for Multi-Gig capability (1 / 2.5 / 5 / 10Gig), and provide root cause diagnosis when link speed downshifting occurs.

## 24-Hour Monitoring for Intermittent Issues

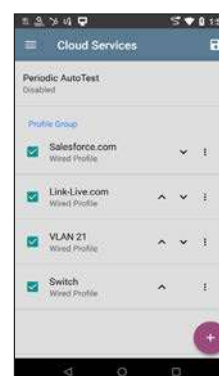
**Periodic AutoTest** - In this mode, AutoTest runs at specified intervals (from 1 minute to 24 hours) and sends the results to Link-Live to view the results over time. This is an effective way to “monitor” aspects of your network for an extended period, or to help diagnose intermittent issues without having to manually execute multiple tests. Results are automatically timestamped and can be prefixed with a user-entered comment for grouping or organization. Test results can be quickly analyzed in Link-Live using the filtering and sorting functions. Email notifications can warn you when errors are found.



*NBASE-T switch network with VLAN and 802.1x authentication*



*Add & customize profiles for standardized testing*



*Test profiles enable comprehensive, consistent infrastructure testing*



*HTTP test reveals cloud/web-based services response times*



*Cabling SNR measurement validates Multi-Gig links*



*Periodic AutoTest enables monitoring infrastructure for intermittent issues*

## 10G copper/fiber wired performance tests for critical links and key devices

The LinkRunner 10G works as a test peer with the EtherScope nXG Network Performance Test (NPT) to stress critical network links, such as switch ports to servers/storage/Wi-Fi access points, uplinks or WAN links, with up to four simultaneous data streams at up to 10G line-rate. It verifies the link's compliance to service level agreements (SLA) based on throughput, packet loss, QoS, delay and jitter.

This performance test can be run at up to full line-rate in order to measure the top-end bandwidth and quality of your network from end-to-end, or for particular network segments. It can also be utilized to bench-test switches for optimal configuration prior to rollout into production. For troubleshooting on a production network (where excessive test traffic could be detrimental), many users will configure the NPT feature with a low stream of traffic (even just 128Kbps) in order to characterize network quality, identify possible packet loss, delay and jitter, and validate QoS.

Settings for data streams and thresholds for VoIP or video service can be stored and recalled where needed, saving configuration time.

For key servers/services in the cloud or Internet, engineers can pre-define tests and thresholds to verify their connectivity and performance using ping, TCP connect, HTTP, or FTP. Continuous testing with response time measurements is available to verify consistency and identify intermittent issues. These tests can be easily recalled by field technicians to reduce configuration time or mistakes, to get more done faster.

Performance Test Relationships - EtherScope nXG can conduct performance tests through various end-points



EtherScope™ nXG

LINE RATE TEST  
Ethernet

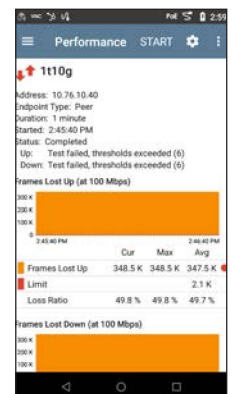


IPIERF TEST  
Wi-Fi/Ethernet

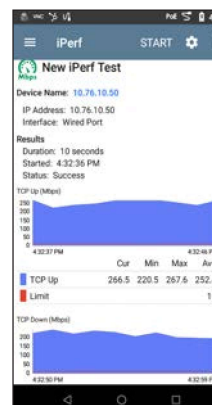
Test Accessory



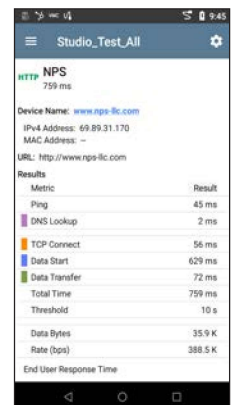
Performance test with up to 4 streams and 4 end points



Frame loss, jitter, and latency charted



iPerf throughput test with TCP or UDP frames



HTTP test against a webserver with end-user response-time analysis

TCP Connect Test -TCP Connect Test showing response time over time (up to last 24-hours)



### List of Problems Automatically Detected by LinkRunner 10G Discovery Enabled

Bad Subnet Mask	High Interface Utilization*	High Disk Utilization*
Duplicate IP Address	High Interface Errors*	High Memory Utilization*
DHCP Server Not Responding	High FCS Errors*	Recent Device Reboot*
EtherScope nXG Received Used IP from DHCP	High Packet Discards*	Spanning Tree Topology Change
EtherScope nXG Lost DHCP Lease	Detected Half-Duplex Interfaces	SNMPv3 Agent Responded to SNMPv1/v2 Query
Max Clients on SSID	High CPU Utilization*	

\*Problems detected with user-definable threshold



## AllyCare-Enabled Features Deliver Advanced Troubleshooting Capabilities

The following features below are only available to customers with AllyCare support on their LinkRunner 10G. Visit [www.netally.com/support/#AllyCareSupport](http://www.netally.com/support/#AllyCareSupport)

### Discovery – Know who and what is on your network

The LinkRunner 10G discovery app automatically discovers your network immediately upon power-up. The discovery provides quick security and health audits of the network devices across multiple VLANs and subnets.

Devices are classified and correlated to provide complete visibility of their name, network addresses, VLAN, SSID, device type, and where available, traffic statistics. Engineers can name and set authorization status for devices discovered. Discovery results can be directly uploaded to the complimentary Link-Live Cloud Service for storage, conduct detailed analysis of devices discovered with filter and sort tools, or export to CSV/PDF files as documentation.

LinkRunner's discovery can be enriched by accessing SNMP MIBs of infrastructure devices. It shows details such as device configuration summary, interface configuration and traffic detail, SSIDs supported by WLAN Controllers, and devices directly connected to switches. Community strings entered are concealed from view.

Discover possible security risks caused by users and others: 2nd DHCP offers indicating possible rogue servers, unknown switches granting access to multiple devices.

The LinkRunner 10G's discovery automatically detects problems. It shows possible cause(s) for each problem detected, and it has integrated troubleshooting tools to investigate further to get to root cause.

### Switch Management

Drill into switch interfaces via SNMP for additional diagnostics, including trend graphs on utilization, errors, discards, half-duplex (HDX), RSTP, and recent reboots.

### Path Analysis

Shows the switch/router path connecting the LinkRunner 10G to an IP device on across wired and Wi-Fi networks, and even beyond the local network, e.g., from the LinkRunner 10G's test port to a server in the cloud or data center. The LinkRunner 10G offers built-in tools to conduct further analysis of the devices along the path: view configuration, interface traffic statistics, launch Telnet or browser, conduct port scan, ping and more.

### Simple “Access-Anywhere” Remote Control

LinkRunner 10G permits a remote engineer to control the EtherScope nXG “out of band” (using VNC) to collaborate with technicians on-site, or to troubleshoot remotely where there is no local staff.

But connecting to distant sites via VNC on different networks is difficult or impossible, particularly behind NAT firewalls. With the AllyCare-enabled web remote control, users can instantly connect to remote units through the Link-Live Cloud Service – anywhere in the world – for collaborative and remote troubleshooting.

*Device detail showing VLAN, interfaces, uptime, & more with drill-down*



*Interface traffic statistics - correlated for 24 hours to detect intermittent events*



*Path Analysis shows the device & interfaces that UDP/TCP traffic traverses*



*Shows the interfaces of devices present in path analysis*





Additional Troubleshooting Tools

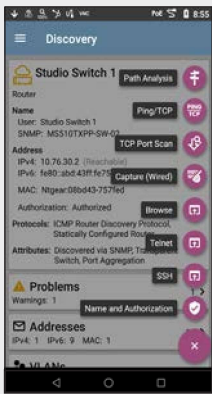
**Packet Capture:** You can capture up to 10G line-rate to create a PCAP file of up to 1Gigabyte. Packet slicing and filtering are supported, and PCAP files can be uploaded to the Link-Live Cloud Service for easy sharing.

**Cable Test:** determine length, shorts, and split pairs and locate opens on UTP cable. Verify the wiremap of UTP and ScTP cable with a WireView adapter. It can generate either analog tone or the unique digital tone for the Fluke Networks® IntelliTone™ Probe for quick cable tracing.

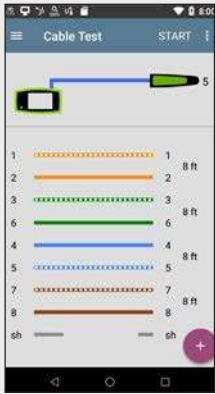
**Android Apps:** Users can download apps from the Link-Live app store to accomplish many tasks in addition to testing.

Examples of Android apps available to download to LinkRunner 10G

Configuration					
Testing					
Documentation					
Collaboration					



Tools, such as a browser, are available to conduct device level investigation



Cable test with Wiremap detecting distance to fault, including cable shield

Automated Test Results Management

Serving as a centralized test results and device management system, the free Link-Live cloud service transforms team workflows with the ability to quickly and easily log, document, and report test activity from all LinkSprinter®, LinkRunner AT, LinkRunner G2, LinkRunner 10G, AirCheck™ G2, and OneTouch™ AT hand-held network testers.

Once the instrument is connected to the Link-Live Cloud service, your test results are automatically uploaded to the dashboard for project management and reporting. You have the option of uploading additional files, screenshots, images, profiles, packet captures, location information, and comments anytime. Also, certain NetAlly instruments with AllyCare Support can receive firmware updates “over the network” from Link-Live as they become available.

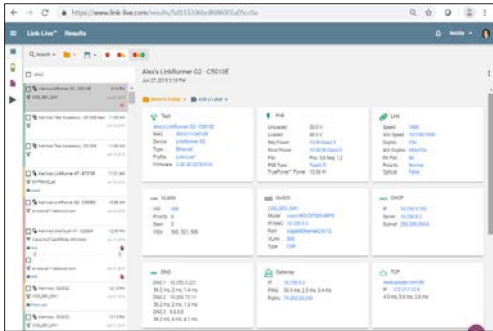
An API is available to retrieve and integrate data from Link-Live into other management platforms, such as your trouble-ticket application or network management system. This gives you the ability to easily provide proof-of-performance and better manage jobs and staff efficiency.

This unified dashboard of both wired and Wi-Fi network connectivity results enables you to:

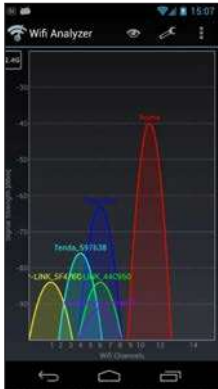
- Reduce results management overhead for multiple testers and users
- Enables seamless collaboration between site personnel and remote experts
- Attach photos, user comments to each result, adding context for future changes and troubleshooting
- For asset management, ability to associate serial numbers of installed devices, and/or cable/walljack label to specific test results

Wi-Fi Network Visibility

With the use of a USB-A based Wi-Fi adapter (such as the Edimax AC1200 for 802.11ac/b/g/n) provides for connectivity and wireless testing using a third-party apps, available for download from the Link-Live app store. While not nearly as powerful as the tools available in EtherScope nXG or AirCheck G2, this capability provides an essential level of visibility where needed. Note, other than the upload/attachment of screen captures, there is no integration from third-party apps with Link-Live. Information collected from these apps cannot be saved to Link-Live (another reason to utilize EtherScope nXG or AirCheck G2 for Wi-Fi troubleshooting.)



Simplify report generation across media types for network deployment documentation



Third-party apps, such as Wi-Fi Analyzer, can be used for WLAN visibility.

## Models and Accessories

Model Number/Name	Description
LR10G-100	LinkRunner 10G Advanced Ethernet Tester Includes: (1) LR10G mainframe with Li-ION battery, G3-PWRADAPTER, SFP+MR-10G850, Inline RJ-45 coupler, WireView wire mapper #1, Quick Start Guide, and small softcase.
LR10G-100-KIT	LinkRunner 10G Professional Kit Includes: (1) LR10G mainframe with Li-ION battery, G3-PWRADAPTER, G3-HOLSTER, SF-P+MR-10G850, SFP+MR-10G1310, Cat 6 RJ-45 inline coupler, WireView wire mappers #1-#6, IntelliTone™ 200 Probe, Quick Start Guide, and medium softcase.
LR10G-100-1YS	1 year AllyCare Support for LR10G (Use for either LR10G-100 or LR10G-100-KIT)
LR10G-100-3YS	3 year AllyCare Support for LR10G (Use for either LR10G-100 or LR10G-100-KIT)
G3-PWRADAPTER	AC Charger replacement/spare for EXG-200 mainframe with country power cords
EXG-LR10G-KIT	Etherscope nXG 10G Performance Kit Includes: (1) EtherScope nXG (EXG-200-KIT) and (1) LinkRunner 10G (LR10G-100) Use LR10G-100-1YS and EXG-200-1YS for 1 year of AllyCare support Use LR10G-100-3YS and EXG-200-3YS for 3 years of AllyCare support
G3-HOLSTER	Holster for LR10G mainframe
SFP+MR-10G850	SFP+ Optical Transceiver Module, SX/SR, 1G/10G, 850nm, Multimode
SFP+MR-10G1310	SFP+ Optical Transceiver Module, LX/LR, 1G/10G, 1310nm, Singlemode
US-WIFI-BT-USB	Edimax n150 Wi-Fi & Bluetooth USB Adapter for US and Canada
EU-WIFI-BT-USB	Edimax n150 Wi-Fi & Bluetooth USB Adapter for Europe

## Specifications

General	
Dimensions	4.05 in x 7.67 in x 2.16 in (10.3 cm x 19.5 cm x 5.5 cm)
Weight	1.68 oz (0.77kg)
Battery	Rechargeable lithium-ion battery pack (7.2 V, 6.4 A, 46 Wh)
Display	5.0 in color LCD with capacitive touch screen (720 x 1280 pixels)
Host Interfaces	RJ-45 and SFP Analysis ports RJ-45 Cable Test and Management Port USB Type-A Port and USB Type-C On-the-Go Port
SD card slot	Supports Micro SD card storage - up to 64GB supported
Memory	Approximately 8 GB available for storing test results and user applications, 1 GB packet capture buffer
Charging	USB Type-C 45W adapter: 100-240 Vac, 50-60 Hz; DC Output Power 15 V (3 A) RJ-45: 802.3at PoE (25W) or higher
Media Access	Copper: 10M/100M/1G/2.5G/5G/10G Fiber SFP Adapters: 1G/10GBASE-X
Supported IEEE Standards	Wired: 802.3/ab/ae/an/bz/i/u/z PoE: 802.3af/at/bt, Class 0-8 and UPOE
Cable Test	Pair lengths, opens, shorts, split pairs, crossed, straight through, and WireView ID Multi-Gig link Signal-to-Noise (SNR) measurement (5 dB threshold)

## Specifications *(continued)*

Environmental	
Operating Temperature	32°F to 113°F (0°C to +45°C)
	NOTE: The battery will not charge if the internal temperature of the device is above 122°F (50°C).
Operating relative humidity (% RH without condensation)	90% (50°F to 95°F; 10°C to 35°C)
	75% (95°F to 113°F; 35°C to 45°C)
Storage temperature	-4°F to 140°F (-20°C to +60°C)
Shock and vibration	Meets the requirements of MIL-PRF-28800F for Class 3 Equipment
Safety	IEC 61010-1:2010; Pollution degree 2
Altitude	Operating: 4,000 m; Storage: 12,000 m
EMC	IEC 61326-1: Basic Electromagnetic Environment; CISPR 11: Group 1, Class A
Certifications and Compliance	
CE	Conforms to relevant European Union directives
CSA	Conforms to relevant Australian Safety and EMC standards.
FCC	Complies with 47 CFR Part 15 requirements of the U.S. Federal Communications Commission.
SP	Listed by the Canadian Standards Association.

©2020 NetAlly. NetAlly® is a registered trademark of LinkRunner® LLC dba NetAlly. Third-party trademarks mentioned are the property of their respective owners.



[netally.com/products/linkrunner10g](https://netally.com/products/linkrunner10g)



### CONTACT IN FRANCE

WAVETEL | PARIS – RENNES – LARMOR-PLAGE  
| [sales@wavetel.fr](mailto:sales@wavetel.fr) - +33(0)2 99 14 69 65

## Premium Customer Services



AllyCare is a comprehensive support and maintenance service for NetAlly's Network Tools and AirMagnet® software that offers significant value over standard warranty. Membership of AllyCare can be purchased as either a 1-year membership or the value-added 3-year membership rate.

[netally.com/support](https://netally.com/support)



simplicity • visibility • collaboration

LR10G-DS-20-V1