

# ENQT Netztester

Quick and easy check of mobile networks



# We simplify wireless technology!



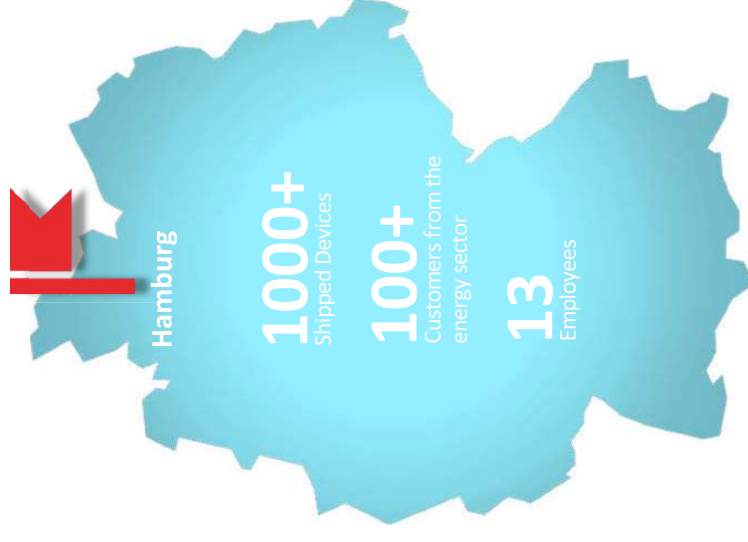
ENQT  
ENGINEERING DUALITY

## Who we are:

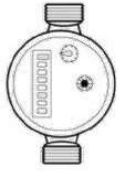
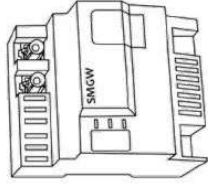
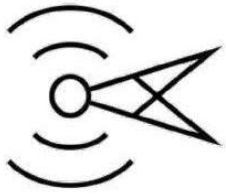
- Start-up from Hamburg
  - Specialised in mobile communications
  - Reliable know-how
- Easy-to-use products for complex issues

## We are offering:

- innovative mobile radio measurement technology!
  - We use the cutting edge technologies and offer you self-developed measurement equipment for your requirements!
  - RF measurement technology for 2G/3G/4G and wireless M-Bus
  - Special solutions for:  **NB-IoT**  **LTE-M**  **LoRaWAN**



# Challenges



## Industrial Challenges

- Linking of machines, sensors and devices with gateways increases sharply
- Requirements on the radio network are increasing for
  - reliability
  - and coverage
- Changes in regulatory requirements
- Second visits to the customer & installation aborts are expensive and time-consuming



# Our Products



## Our mobile radio measurement technology for your applications - Made in Hamburg!

We provide innovative, easy to use measurement technology for mobile radio. Avoid signal losses and evaluate mobile radio networks holistically!



### Netztester LTE

- Measuring device for capturing mobile radio signals
- One-time measurement and live measurements possible
- Export option of measured values

### Netztester WMR

- Reliable evaluation of wireless M-Bus networks
- Raw data view of the wireless M-Bus telegrams
- Inkl. smarter iOS and Android App

### Netztester Cloud

- Central location for measurement data management
- Easy device management
- Highest security standards

# Netztester LTE



## Reliably test mobile networks with ENQT's compact network testers!

Avoid expensive installation aborts, second visits and evaluate mobile networks holistically. We capture signal strength, data transfer rates and many other network parameters.



Integrated SIM



+ more than 300 European cellular networks



Simple data export



Cloud – Access  
(central device management)



## Product features

- **Meter test** - for a full check of the mobile network
- **Live Signal** – our live measurement mode for antenna positioning
- Multiple measurements and trend diagram
- Own antennas can be connected for optimal testing
- Touch display for easy handling
- SAP/GIS - integration for an automated data exchange
- Ability to upgrade between model variants
- Fully automatic software updates

# Scope of delivery



## The scope of delivery of the Netztester LTE

The included accessories will make it easier to use the Netztester and will support you during operation.



### Scope of delivery

- SMA connector for connecting your own antennas
- Large battery for a whole working day
- Network tester built with a rugged case
- Sturdy carrying case
- USB charging plug
- Charging cable
- FAKRA-Adapter

# Variations 1/2



## Choose the version that fits best to your project!

Whether you are a small company or a large corporation, our solutions will fit your individual requirements!



You can get a more detailed description of the functions here!

	LTE <sub>lite</sub>	LTE	LTE+	LTE <sub>max</sub>
2G/3G/4G	✓	✓	✓	✓
Meter test	✓	✓	✓	✓
LiveSignal	✓	✓	✓	✓
Language support	✓	✓	✓	✓
Video tutorials	✓	✓	✓	✓
Provider configuration	✓	✓	✓	✓
Survey+ (Interval measurement)	-	✓	✓	✓
RSSI/RSRP/RSRQ Switch	-	✓	✓	✓
International networks	-	✓	✓	✓
LiveHistory (History chart)	-	✓	✓	✓
Local measurement data export	-	✓	✓	optional
Sturdy transport case	-	✓	✓	✓
InstalMeasure	-	✓	✓	✓

# Variations 2/2



**We present our device functions to you fairly and transparently - and so do our prices!**

Please feel free to contact us. We will be very happy to assist you!



You can get a more detailed description of the functions here!

	LTE <sub>lite</sub>	LTE	LTE+	LTE <sub>max</sub>
Color coding	-	✓	✓	✓
EasyIntegration (QR-Scan)	-	-	optional	optional
Regular updates	-	-	✓	✓
Remote maintenance & configuration	-	-	✓	✓
Live measurement data export	-	-	✓	✓
Speed tests & runtime measurement	-	-	-	✓
Cloud	-	-	-	✓
ChannelScan	-	-	-	✓
API-Integration	-	-	-	✓
FrequencyLock	-	-	-	✓
CloudSync	-	-	-	✓
Upgradeable	✓	✓	✓	-
Price*	599 EUR	899 EUR	899 EUR	899 EUR
Service fee (p.a.)**	-	-	119 EUR	699 EUR

\*Prices are exclusive of VAT.

\*\*For a duration of 24 months



# Functions (extract)



**Zähler** ...10.2020 16:36

<b>T-Mobile (DE)</b>	
GSM 900	330 kb/s
LTE 1	7.1 Mb/s
-7.3 dBm	
-104 dBm	
<b>Vodafone (DE)</b>	
GSM 900	323 kb/s
LTE 1	7.5 Mb/s
-67 dBm	
-89 dBm	
<b>Telefónica (DE)</b>	
GSM 900	330 kb/s
LTE 3	23.9 Mb/s
-58 dBm	
-88 dBm	

LTE RSRP

## Meter Test

- Attenuation measurement
- Speed test ( starting with LTE+)
- Color visualization
- **Survey+** interval measurement possible
- RSSI/RSRP/RSRQ Switch

**WLAN**

Access Point, geöffnet  
TMate 11-3be1-sp

Aktivieren

Ändern

## LocalExport (without LTE<sub>lite</sub> & LTE<sub>max</sub> )

- AccessPoint can be opened for data export
- Providing data as a .csv file

**T-Mobile (DE)**

LTE 3

**-90 dBm**

RSRP

Cell ID: 26433025 LAC: 4602

## Signal test (LiveSignal)

- Display of live attenuation measurement
- Display of attenuation, frequency (band), Cell-ID and base station
- Switch to LiveHistory
- Attenuation history of the last 90sec.
- RSSI/RSRP/RSRQ Switch

**Testauswahl**

Dämpfung Geschw.

T-Mobile (DE)

GSM  UMTS  LTE

Vodafone (DE)

GSM  UMTS  Standard

## Provider configuration

- Select the
  - provider of your choice
  - Wireless standards
  - Frequencies and bands

# Netztester WMR



## Testing Wireless M-Bus Installations easily with our Netztester WMR

The network tester WMR validates wireless M-Bus signals concerning signal level and data transmission. This allows a quick check and avoids second visits.



Different user roles



Data synchronization via  
Bluetooth Low Energy



Smart Android and iOS app included



Connect two WMR for  
transmitter/receiver simulation



**M-Bus**  
WIRELESS  
-Assistant  
incl. App

### Functions

- Holistic evaluation of wireless M-Bus networks
- Complete network analysis through raw data
- Flexible use of own antennas
- Easy identification of the installation location of wM-Bus devices
- Easy handling

### Scope of delivery

- Netztester WMR
- Rugged carrying case
- USB-extension
- Quick guide

# Netztester Cloud



## All your measurement data safely at a single glance!

As a central location for your measurements ENQT offers a solution for the transmission and location of the measurement data - Netztester Cloud! It synchronizes automatically with your network testers!



Global access to your measurement data from cell phone, tablet and PC



Unlimited data storage



Central measurement data and device management



Interactive map function



Highest standards for your security



## Functions

- Easy data export via CSV
- Clear station report as PDF
- Creation of different user roles
- Keep track of your measurements
- API integration with your SAP/GIS possible



Contact distributeur :  
WAVETEL  
sales@wavetel.fr | +33(0)2 99 14 69 65  
www.wavetel.fr

ENQT Netztester