

Monitoring NetApp Storage

As technology has advanced, so has the need for storage. To feed this need, many organizations turn to the leader in storage technology, NetApp. Yet, most organizations don't limit themselves simply to NetApp storage products. Instead, they have a mixture of different storage vendors in their environment, which, in turn, interact with a mixture of other vendor products across the IT spectrum. All of this leads to a management nightmare, with operations teams jumping from screen to screen trying to manage different technology products with different management applications.

ScienceLogic's hybrid IT monitoring platform not only monitors NetApp systems, it also provides deep coverage across a broad range of other storage vendors. Further, the platform discovers and monitors all other areas of the IT stack (power, network, servers, applications, and public cloud), ensuring you have complete visibility of your infrastructure.

Automatic Discovery and Dependency Mapping Dramatically Reduces the Time for Root Cause Analysis

Automatically discover your NetApp clustered Data ONTAP and Data ONTAP 7-mode elements as well as their dependencies with the rest of the environment. For example, use visual topology maps to see how a NetApp LUN supports a VMware virtual machine and ensure that your team can quickly spot the root cause of any service issue.



Alliance Partner

KEY BENEFITS

- Automatically discover and apply the right monitoring policy to your entire NetApp infrastructure.
- Detect the dependencies between your NetApp elements and the rest of your environment, dramatically reducing the time needed for root cause analysis.
- Provide views into the value the services your NetApp infrastructure is supporting through powerful executive-level dashboards.

Benefit from Best Practice-Based Monitoring Templates for NetApp and the Rest of Your Environment

Monitoring templates, built by NetApp experts, ensure you are monitoring the right metrics out-of-the-box. Paired with templates covering your other storage vendors, network elements, servers, applications, and public cloud resources, these NetApp templates ensure you spot potential service issues before they occur. Finally, powerful event correlation and alerting ensures alerts are tied to the right storage elements and are delivered to your NetApp team near real-time.

Powerful Dashboards Visualize Key Trends in Your NetApp Architecture

A picture is worth a thousand words. ScienceLogic's platform gives organizations the ability to quickly build their own dashboards in under five minutes using a built-in, GUI-based dashboard editor. These fully multi-tenant dashboards allow organizations to apply whichever dashboards they choose across all groups and—in the case of MSPs—separate customers, automatically showing only the data those organizations are entitled to see.



Benefit from Improvements to Our NetApp Monitoring with Just the Click of a Button

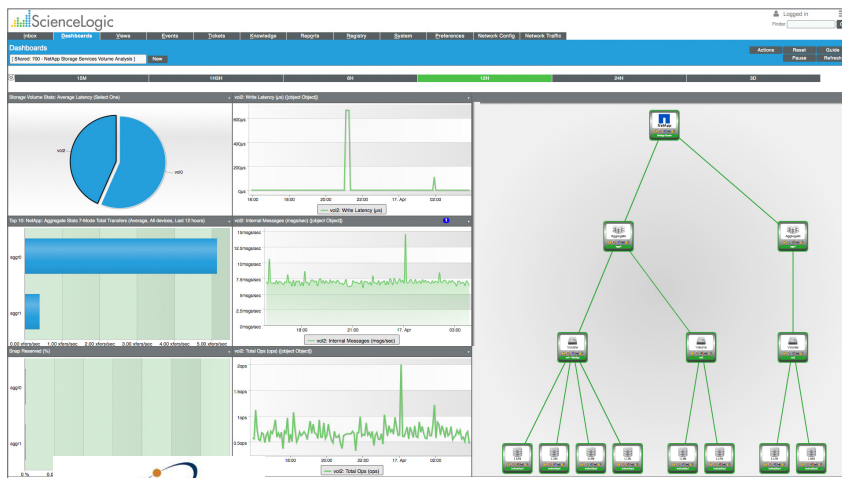
Our development and focus on NetApp is constant. This provides our customers with the most up-to-date monitoring abilities for NetApp on the market today. As we develop new NetApp capabilities, our customers simply download the appropriate PowerPack to their system and they automatically benefit from all of the updated dashboards, eventing, and alerting polices, as well as monitoring templates.

Clustered Data ONTAP

Metric Type	Elements Monitored
Performance	Cluster, node, aggregate, volume, LUN, network, disk, RAID, WAFL, and NVRAM statistics
Capacity	Cluster and aggregate
Availability	Network LIF status, network port status, temperature, power status, fan status, NVRAM battery status, SnapMirror info, snapshot info

Data ONTAP 7-mode

Metric Type	Elements Monitored
Performance	Controller, vFiler, aggregate, volume, LUN, network, RAID, disk, WAFL, and NVRAM statistics
Capacity	Volume and aggregate
Availability	Network interface status, power supply status, fan status, temperature, snapshot info



ScienceLogic's platform automatically discovers all of the NetApp elements and their cross-technology dependencies. Further it applies the right monitoring template to each component, ensuring the services your NetApp storage supports operate at peak performance.