

# savvius Insight™



Mini appliance. Mini price. Maximum network visibility.

## Benefits

- Saves money by having an affordable network monitoring appliance at every location
- Provides remote troubleshooting and reporting capabilities 24x7 without requiring travel
- Reduces mean time to resolution (MTTR) by providing advanced troubleshooting capabilities at the edge
- Increases ROI of Omnipliance deployments through use of Omnipeek and Multi-Segment Analysis
- Provides built-in, web-based, local or remote long-term reporting using ELK or Splunk® technology

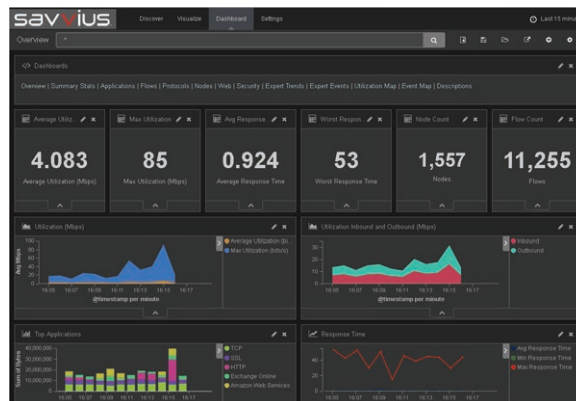
## The Challenge

Small-to-medium sized businesses (SMBs) and remote sites need powerful, affordable solutions for real-time visibility into network and application performance.

## Solution

Already the industry's most compact and cost-effective network monitoring and troubleshooting appliance, Savvius Insight enables anyone responsible for 1G networks in most SMBs and remote enterprise offices to visualize, detect, pinpoint, diagnose, and manage network issues with a single low-cost solution.

Savvius Insight is a compact, fanless, quad-core, six-port mini-appliance that provides all the benefits of Savvius' enterprise datacenter solutions to networks operating at 100 Mbps or less. Savvius Insight has 128 gigabytes of storage that holds days, weeks or months of network data, depending on network traffic.



Savvius Insight has built-in, long-term reporting that starts the instant you connect it to your network. Simply point your browser at Insight to see detailed analytics presented in intuitive dashboards. It also has the ability to forward data to a remote ELK server, or to a remote Splunk server, aggregating the data from multiple Savvius Insights into a single database for long-term reporting and centralized data access across multiple locations. View and analyze your data easily and intelligently with the customizable dashboards. Additionally, a version of Savvius Omnipeek is included for viewing and exploring network performance and security data.