

Multi-TS

HEVC - AVC - MPEG-2 High Density Multichannel Compressed Payout

Multi-TS is an easy to use and cost effective compressed video payout server for professional broadcast or streaming applications such as for satellite, terrestrial, cable networks, or telco/IPTV operators and payout facilities.

Multi-TS supports H.265 / H.264 / MPEG-2 TS files, either for PIP, SD, HD, full-HD or UHD channels. Video and audio PID's can be selected and remapped for multiple SPTS over UDP or RTP multicast streaming.

Secured by HDD drives in RAID configuration, redundant power supplies and carrier-grade built quality, the Multi-TS can work in any network or head-end situations for 24 - 7 linear payout with an optional integrated scheduler and payout event automation.

BBright's advanced technology and field proven know-how enable the Multi-TS server to deliver uncompromised compressed payout reliability for multiple and mixed resolution linear channels with a scalable license scheme.

Multiple SPTS Multicast, Scalable by Licence HDR formats support

Advanced TS and GOP Processing Integrated Scheduler and Payout Automation

FEATURES

Video (by channel)

- PIP, **SD, HD, full-HD, Ultra HD** (3840 x 2160) and **4K**
- Frame rates : 23.98, 24, 25, 29.97, 30, 50, 59.94, 60 fps
- Max. combined TSolP bit rate: 500 Mbps / CBR streaming
- Bit rate adaptation by null-packet stuffing
- **PCR, Continuity Counter correction, PTS/DTS processing**
- **GOP cleaning** for HEVC and AVC .ts files
- **PID re-mapping: 1x Video - 10x Audio - 5x Subtitles**
- Un-processed TS (raw) playback mode also available
- Looping playlist mode / master + slave channel(s) payout
- Payout event scheduler with integrated automation [option]

File Ingest and Support

- SPTS and MPTS ingest through GbE port (FTP / NAS) or USB
- Video Codec
 - **HEVC / H.265**, with HDR10-PQ, HLG and Advanced HDR by Technicolor **HDR** compatibility
 - **MPEG-4 AVC / H.264**
 - **MPEG-2**
- Video container: .ts file

Audio

- Audio Codec support:
 - AAC, HE-AAC (v1 and v2), AAC-LC / MPEG-1 Layer II
 - Dolby™ AC-3, E-AC-3, AC-4 (pass-through)

Dual TSolP Outputs

- Multiple SPTS Multicast over IP in UDP or RTP / MPTS in raw
- Stream duplications on secondary Multicast address
- FEC CoP 3 and VLAN support

CHASSIS

- 1RU chassis with up to 6 front loading 2.5in HDD slots
- Carrier-grade built quality and reliability for broadcast
- Redundant power supplies (hot swappable), 100-240 VAC, 50-60Hz, 400W max. [200W typical usage]
- Two USB 3.0 and two USB 2.0 interfaces
- Two IP-bonded GbE ports for GUI control/ingest
- Two independent GbE ports for TSolP streaming
- Front-to-rear airflow
- Dimensions, W: 437 mm, D: 520 mm, H: 43 mm (1RU)
- Weight, 10kg

CONTROL and AUTOMATION

- Intuitive Web-based G.U.I. with **channel's payout thumbnails**
 - Manual playlist or payout event scheduler management
 - Channel renaming and reordering
 - Alarms and logs, software and channel license update
- REST API control and SNMP v2c supervision
- **1 + 1** Main and Back-up server's **content redundancy**
- Payout control by text-based, xml, json traffic import [option]
- UID, RESET and POWER front buttons with five status LED's

FRONT PANEL LAYOUT



Multi-TS / SD, HD, Full HD, Ultra HD Payout solution

INTERNAL ARCHITECTURE

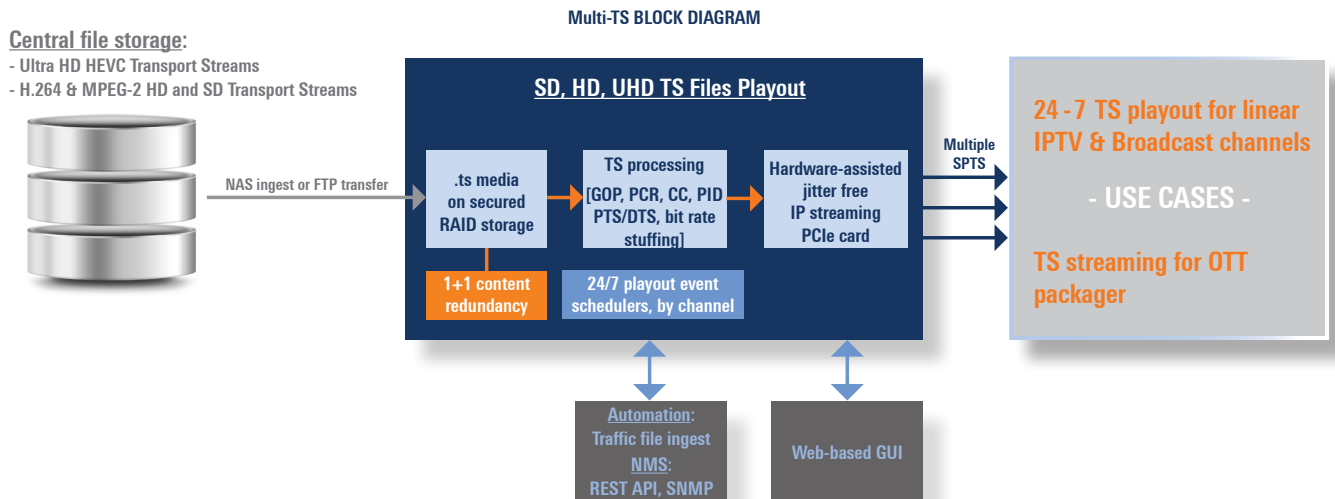
Transport Stream file ingest on the data/content HDD's is typically performed via FTP transfer/NAS connection, or alternatively via an USB attached device. Multiple channel payout, file ingest and also content redundancy between Main and Back-up servers can all run in parallel.

TS files can be played simply un-modified (RAW mode) or with bit rate stuffing, PID re-mapping and PCR, Continuity Counter, PTS / DTS processing. HEVC and AVC TS GOP cleaning ensure seamless transitions at playlist playback loop.

Channel's thumbnails/proxy, audio bar graphs and HDR flags provide immediate payout feedback monitoring to the operator.

The scheduler option allows, by channel, a 24 - 7 payout event programming, either by the web-based GUI or by importing channel specific traffic files (text-based, json, or xml formats). A looping playlist can also autofill the payout scheduler for a given period of time. One or several slave payout channel(s) can play in synchronization with a master channel.

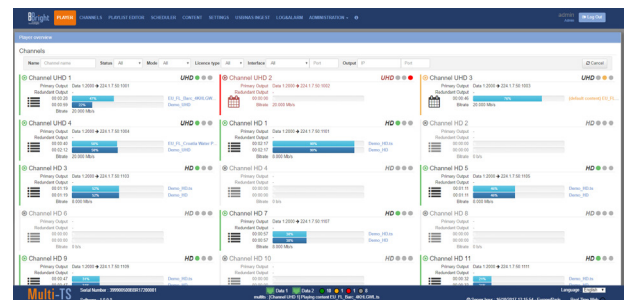
A specific Gbit Ethernet output card, with dual interfaces, is dedicated for low-jitter TSolP streaming and avoids bursty packet transmission to the downstream equipment.



CHANNEL CAPABILITY (standard version: 3 TB)

Channel type / TS bit rate	4 Mbps	8 Mbps	18Mbps	40Mbps
SD channels	up to 20x	-	-	-
HD channels	-	up to 20x	-	-
UHD channels	-	-	up to either 12x	or 8x

WEB G.U.I. SCREENSHOT



HARDWARE CONFIGURATION and OPTIONS

System and Storage Versions

- Factory pre-installed appliance configuration:
 - LINUX based
 - Two 1 TB enterprise grade HDD for operating system, firmware and licenses; [1+1] RAID 1 configuration
 - Four 1 TB enterprise grade HDD for content ingest and payout; [n+1] RAID 5 configuration
- **Individual SPTS output licenses set by video resolution:** for PIP, SD, HD and Full-HD, or UHD channels
- **Optional scheduler :** individual payout schedules, by channel

ORDERING INFORMATION and AVAILABILITY

- Part number: **Multi-TS (3 TB storage)**
- Part number: **Scheduler (option)**

Multiple channel TS payout is available for shipment

Please contact sales for ordering details relative to product configuration or other requested options

August 2019, rev. 0.85. Product specifications are subject to changes without notice and are not contractual