



Sunsight™
Alignment Solutions



Tel: +1 (321) 244-9443

sales@sunsight.com

Sunsight MW08 Microwave Path Alignment Kit

High Accuracy Real Time End-to-End Path Alignment System

- ✓ Aligns backhaul antenna links in minutes regardless of distance or frequency
- ✓ Link can be aligned with or without radios installed or powered.
- ✓ Kit determines the required path alignment values automatically (target azimuth and elevation), eliminating potential data entry errors, incorrect initial path design or flawed data sheets.
- ✓ Each all-inclusive kit includes two alignment units to allow simultaneous alignment of both sides of the link in minutes
- ✓ Can also be used to align one end of link and the other end at a later time, eliminating the need for two crews to align a link
- ✓ Azimuth, tilt, roll, height, photos, and location (Lat/Long) captured in PDF report for customer and government communication agency records
- ✓ Includes 3 year Manufacturer's Warranty



The system automatically calculates exact alignment using known positional data in real-time and provides the user simple targets for aligning the link. No signal, power, or frequency is needed for Sunsight's innovative patented pathing process.

Technical Specifications

Accuracy:

Azimuth R99*	.24°
Azimuth RMS*	.08°
Tilt/Roll	.1°
Horizontal Position	30 cm (SBAS)
Vertical Position (MSL)	60 cm (SBAS)
Altitude w/ Laser Rangefinder	21 cm (AGL)
GPS Receiver	540 channel
Satellite Constellations	GPS and GLONASS

Battery:

Type	LiFePO4
Life	9 hrs
Charge Time	1.5 hrs

Weight:

Unit Dimensions	5.4 lbs
Mount Dimensions	4 lbs, 42.1"x3.8"x1.7" (106.8cmx9.6cmx4.3cm)

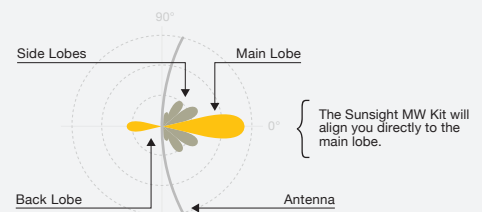
Environment and Connectivity:

Op Temp	-40°C to 70°C (-40°F to 158°F)
Storage Temp	-40°C to 85°C (-40°F to 185°F)
Humidity	95%
Communications	802.11b,g,n
Output	PDF, CSV, HTML, Proprietary encrypted format
Memory	8 GB
Industry Certifications	CE and FCC

What's Included

Part #:	Description:
P/N 1008	Microwave Path Alignment Kit (Includes: 2 MW08 Units, 2 Hard Carrying Cases p/n 7008, 2 Sunsight Android Devices p/n 4150, 2 Universal Microwave Mounts p/n 2200, 2 Side Mounts for RF panel alignment p/n 2110)
P/N MW08	Microwave Path Alignment Single Ended Unit (Includes: 1 MW08 Unit, 1 Hard Carrying Case p/n 7008, 1 Sunsight Android Device p/n 4150, 1 Universal Microwave Mount p/n 2200), 1 Side Mount for RF panel alignment p/n 2110)
P/N 2220 (Added Option)	Microwave Flat Panel Antenna Mount
P/N 3300 (Added Option)	Azimuth Scope Kit – for obtaining Azimuth readings from the ground
P/N 3301 (Added Option)	Laser Rangefinder (Laser Tape Drop) — for antenna AGL height accuracy up to 8 inches.

*RMS or root mean square is 1 sigma accuracy specification, R99 is 3 sigma (99.7%).





Sunsight™
Alignment Solutions



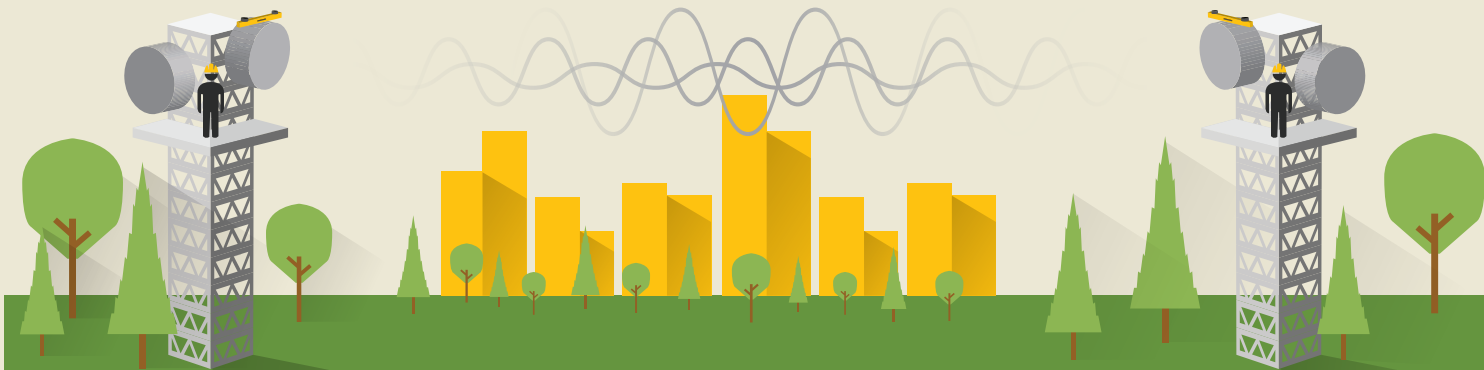
Tel: +1 (321) 244-9443

sales@sunsight.com

Sunsight MW15 Microwave Path Alignment Kit

Real Time End-to-End Path Alignment System

- ✓ Aligns backhaul antenna links in minutes regardless of distance or frequency
- ✓ Link can be aligned with or without radios installed or powered.
- ✓ Kit determines the required path alignment values automatically (target azimuth and elevation), eliminating potential data entry errors, incorrect initial path design or flawed data sheets.
- ✓ Each all-inclusive kit includes two alignment units to allow simultaneous alignment of both sides of the link in minutes
- ✓ Can also be used to align one end of link and the other end at a later time, eliminating the need for two crews to align a link
- ✓ Azimuth, tilt, roll, height, photos, and location (Lat/Long) captured in PDF report for customer and government communication agency records
- ✓ Each kit can also be used as two separate RF cellular antenna panel alignment tools with no additional hardware or software required
- ✓ Includes 3 year Manufacturer's Warranty



The system automatically calculates exact alignment using known positional data in real-time and provides the user simple targets for aligning the link. No signal, power, or frequency is needed for Sunsight's innovative patented pathing process.

Technical Specifications

Accuracy:

Azimuth R99*	.45°
Azimuth RMS*	.15°
Tilt/Roll	.1°
Horizontal Position	30 cm (SBAS)
Vertical Position (MSL)	60 cm (SBAS)
Altitude w/ Laser Rangefinder	21 cm (AGL)
GPS Receiver	540 channel
Satellite Constellations	GPS and GLONASS

Battery:

Type	LiFePO4
Life	9 hrs
Charge Time	1.5 hrs

Weight:

Unit Dimensions	4.5 lbs
Mount Dimensions	4 lbs, 22.7"x3.8"x1.7" (57.6cmx9.6cmx4.3cm)

Environment and Connectivity:

Op Temp	-40°C to 70°C (-40°F to 158°F)
Storage Temp	-40°C to 85°C (-40°F to 185°F)
Humidity	95%
Communications	802.11b,g,n
Output	PDF, CSV, HTML, Proprietary encrypted format
Memory	8 GB
Industry Certifications	CE and FCC

What's Included

Part #:	Description:
P/N 1015	Microwave Path Alignment Kit (Includes: 2 MW15 Units, 2 Hard Carrying Cases p/n 7015, 2 Sunsight Android Devices p/n 4150, 2 Universal Microwave Mounts p/n 2200, 2 Side Mounts for RF panel alignment p/n 2110)
P/N MW15	Microwave Path Alignment Single Ended Unit (Includes: 1 MW15 Unit, 1 Hard Carrying Case p/n 7015, 1 Sunsight Android Device p/n 4150, 1 Universal Microwave Mount p/n 2200), 1 Side Mount for RF panel alignment p/n 2110)
P/N 2220 (Added Option)	Microwave Flat Panel Antenna Mount
P/N 3300 (Added Option)	Azimuth Scope Kit – for obtaining Azimuth readings from the ground
P/N 3301 (Added Option)	Laser Rangefinder (Laser Tape Drop) — for antenna AGL height accuracy up to 8 inches.

*RMS or root mean square is 1 sigma accuracy specification, R99 is 3 sigma (99.7%).

